

ultraframe

Uzone®



It is Ultraframe's policy to continually seek to improve its products, processes and services, and we reserve the right to change specifications without prior notice. Ultraframe is a trading name of Ultraframe (UK) Limited.

Buy direct or from your nearest Ultraframe fabricator/distributor:



UZSG001 1107 BB Q2000



Ultraframe (UK) Ltd
Salthill Road,
Clitheroe,
Lancashire. BB7 1PE

Fabricator First Team tel : 08704 141006
Installer First Team tel : 08704 141002

www.ultraframe.com

Uzone® & Conservaflash® are registered trademarks of Ultraframe (UK) Ltd

Technical Guide

Version: 4.0
December 2007

Ultraframe: world class conservatory systems

For 25 years Ultraframe have continually been at the cutting edge of conservatory roof systems design and engineering.

innovation

Our extensive design resources are focused on developing products that will keep you at the cutting edge of conservatory roof construction and provide the homeowner with greater style and value for money. All this is aimed at helping you secure more sales and helping your business to grow.

engineering

Everything in an Ultraframe system is underpinned by the soundest of engineering principles. Nothing is compromised, no risk is taken and no corners are cut as we realise that it is the installer's reputation that is at risk as well as our own. At the time when there were no national industry standards, Ultraframe created them. First, by obtaining ISO for quality management systems and then BBA certifications for our roof products.

business support

At Ultraframe we offer our customers the highest level of support. From technical on site assistance and our Customer First team for all phone enquiries, to dedicated regional sales teams and full marketing support.

training

We train then we train again. Not just internal staff but installers, sales teams and surveyors too. Over 1,000 companies per year visit the School of Excellence at Clitheroe or take advantage of our two mobile units touring the country.

Uzone®

the most fitter friendly roofing system

The Uzone roofing system from Ultraframe offers you the perfect opportunity to maximise sales to consumers wanting maximum value for money.

- Under 90 minutes to build a 3m x 3m Victorian roof
- 70% fewer parts
- 90% fewer bolts
- Integrated spirit level on ridges
- Highly engineered means virtually silicone free



product in close up

Thanks to its innovative Clicklock technology, there are up to 75% fewer installation steps and 90% less bolts. Since it takes less time to fit this system, installers finish faster and customers are covered quicker!

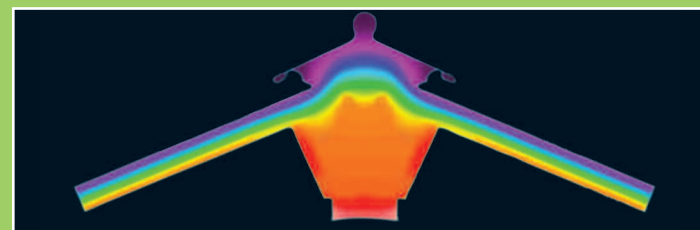
As a consequence, this amazing technology allows Uzone to offer a product for the value end of the market while upholding the highest standards in quality and originality that put the product on a new technological platform.

Uzone breaks the mould by utilising ten times fewer fixings than competitor systems. From an installation point of view it makes sense to make sure that the majority of the claddings and thermal sleeves are pre-fitted because it means speedy, practically bolt-free on-site assembly.

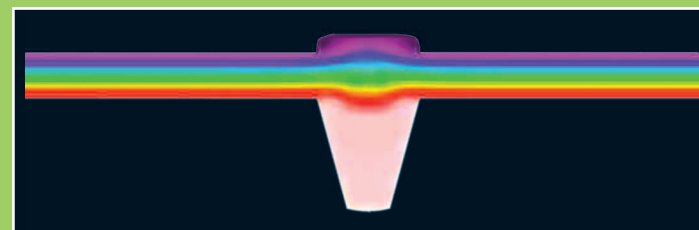


- Perfect symmetry comes as standard with an integrated spirit level on the aluminium ridge beam
- Uzone has the lowest 'u' value of any roof system on the market thanks to its thermal sleeving
- Exclusive installation technology means fitters can travel light. With up to 75% fewer installation steps, the virtually bolt-free Clicklock technology means the only thing required is your skill
- The Invertabar glazing bar reverses traditional glazing bar proportions by making a simple yet radical design change that maximises glazed areas, creating a much lighter, brighter look
- The stylish finial has a purpose much more practical than mere decoration - it masks integrated stack ventilation that helps to eliminate the possibility of condensation
- Using Uzone can save installers up to 60% of on-site time
- Uzone is pre-engineered for the Conservaflash PVC flashing system. The starter bar top caps feature an integral soaker while the ridge end comes complete with saddle flashing as standard
- Uzone has a multitude of new international patents and design rights pending

Thermal gradient diagrams showing effective insulation



Ridge beam and polycarbonate



Glazing bar and polycarbonate



Clicklock



'invertabar' glazing bar



radius end



finial with stack ventilation

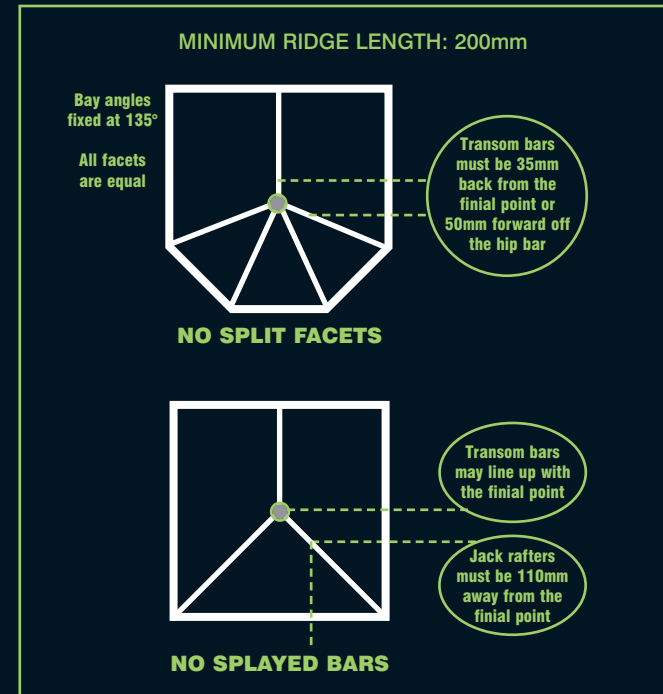


integral spirit level

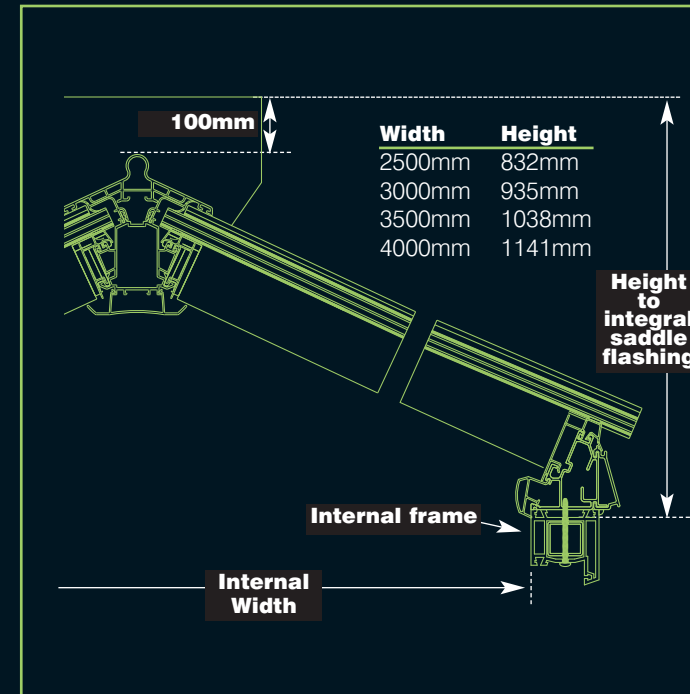


technical information

GLAZING BAR RULES



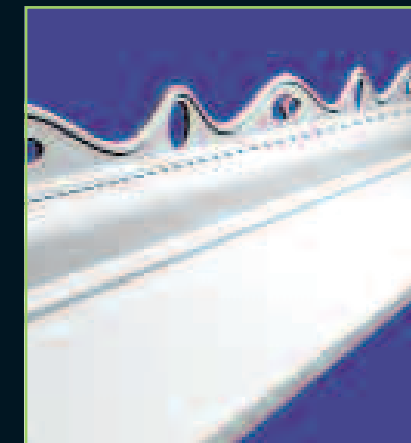
CALCULATING THE RIDGE HEIGHT



	VICTORIAN	GEORGIAN/EDWARDIAN
FRAME SUITABILITY	Can be used on 60 - 70 mm frames	Can be used on 60 - 70 mm frames
MAX. WIDTH	Polycarbonate: 4000 mm Glass: 3500mm	Polycarbonate: 4000 mm Glass: 3500mm
MAX. PROJECTION	Polycarbonate: 4000 mm Glass: 3500mm	Polycarbonate: 4000 mm Glass: 3500mm
BAR CENTRES (MAX.)	Polycarbonate: 1000 mm Glass: 875mm	Polycarbonate: 1000 mm Glass: 875mm
TIE BARS	Not required	Not required
PITCH	22½°	22½°
OTHERS	No intermediate bar to facets. No jack rafters to front facets. Jack rafter off hip bar to side of roof is possible	A centre transom is supplied on some designs

On both Victorian and Georgian/Edwardian designs, the maximum unsupported length of eaves beam (i.e. over the double doors) is 1900mm
Span information is based on a 0.6 snowload

options



cresting

The Uzone ridge has a 'roll top' detail as standard. Cresting is available as an option



glazing

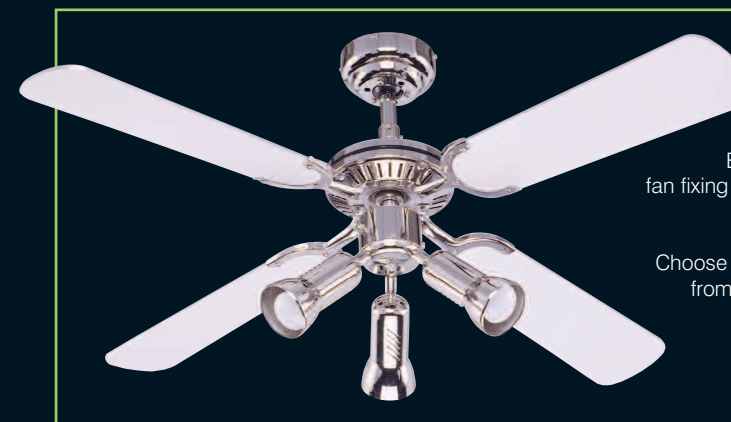
1. Polycarbonate
25mm Clear, Bronze, Opal, Heatguard or Bronze/Opal

2. Glass
Unglazed for 24mm glass units



Conservaflash

Save time and effort on site with pre-engineered, BBA approved, Conservaflash



fans

A fan can be positioned underneath the finial point. Each ridge end is fitted with a fan fixing bracket as standard to make installation simple

Choose from a range of eleven fans - from the contemporary to classic, including patented quick fit technology to speed up installation

roof vent

Fitting between the bars, vents are supplied complete with screwdrive opening mechanism and pole (optional)

Available in both brass and chrome finishes